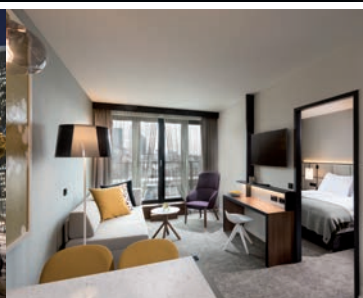




my conference, meeting & event address

Adina Hotel Frankfurt Westend



€89
per person

Day Delegate Package

Leading Conference Facilities

At Adina Hotels, we provide you with everything you need to make your next conference a success. This includes our generously planned conference facilities and equipment for up to 60 guests. The Adina Team will meet your most creative requirements, including your catering for discerning palates, recommendations on extracurricular activities as well as assistance with ticket and transfer bookings. Highly individual and tailored services complement our conference offer.

Day Delegate Package includes:

- Conference room rental
- Standard conference equipment (1 pin board, 1 flip chart, LCD projector, screen, facilitator kit, notepads and pens)
- Free highspeed internet access for all participants
- Coffee break with 3 snacks in the morning (sweet and savoury)
- Unlimited juices and bottled water as well as coffee and tea during the conference
- Lunch buffet or menu of the chef's choice with starter, main course and dessert
- 1 soft drink (0.2l) and one hot drink per person for lunch
- Coffee break with 3 snacks in the afternoon (sweet and savoury)

Enquire Now

Call +49 69 247 420-563 or email: meet.frankfurt@adina.eu

Adina

More space for your meetings

#adinahotels

Peace of mind when you stay with us



At Adina Hotels, we've always had rigorous standards for cleaning and safety, and, during the COVID-19 Pandemic, we worked to deliver hygiene protocols over and above WHO recommendations.

The best place to visit Frankfurt

Centrally located in 'Europaviertel', Adina Hotel Frankfurt Westend is in close proximity to the 'Skyline Plaza' shopping centre with over 170 different shops, restaurants and the largest indoor spa in Frankfurt, the congress centre 'Kap Europa' and Frankfurt Exhibition Centre. The hotel is an ideal base for trade visitors, business and leisure travellers. Guests have easy access to public transport with Frankfurt's main station only 600m from the hotel with direct connection to the airport.

Venue Highlights

- Two meeting rooms
- Capacity for up to 60 delegates
- Catering and residential packages available
- All rooms have daylight and access to the outside
- Lift access





Technical Features

- Comprehensive audio visual system available
- Broadband, fax and modem connection
- Light dimmers in all rooms
- Phone lines in all rooms
- Built-in system with data projector

Accommodation Capacity

- 135 studios, 36 one bedroom apartments and 10 two bedroom apartments

Meeting room capacities

Room	sqm	 Theatre	 Classroom	 U Shape	 Boardroom
Sydney	50	30	18	13	12
Melbourne	30	20	12	10	13
Sydney + Melbourne	105	60	40	34	36

Contact us for your bespoke event.

Adina Hotel Frankfurt Westend

Osloer Straße 3, 60327 Frankfurt

Tel: +49 69 247 420-563, Fax: +49 69 247 420-599

meet.frankfurt@adina.eu, [adinahotels.com](https://www.adinahotels.com)

Adina

Adina Hotel Frankfurt Westend

Meeting rooms

